

Maltese **energy** **efficiency** trends and policies by sector

Dr. Ing. Bonnie Attard
Secretary General, Chamber of Engineers

Agenda

Chamber of Engineers
Energy consumption trends
What is energy efficiency?
EE1 energy efficiency first
Policy implementation efficacy
Efficacy overview
Role of the engineer in the solution

Chamber of Engineers

Who are we?

What do we do?

Voluntary
organisation

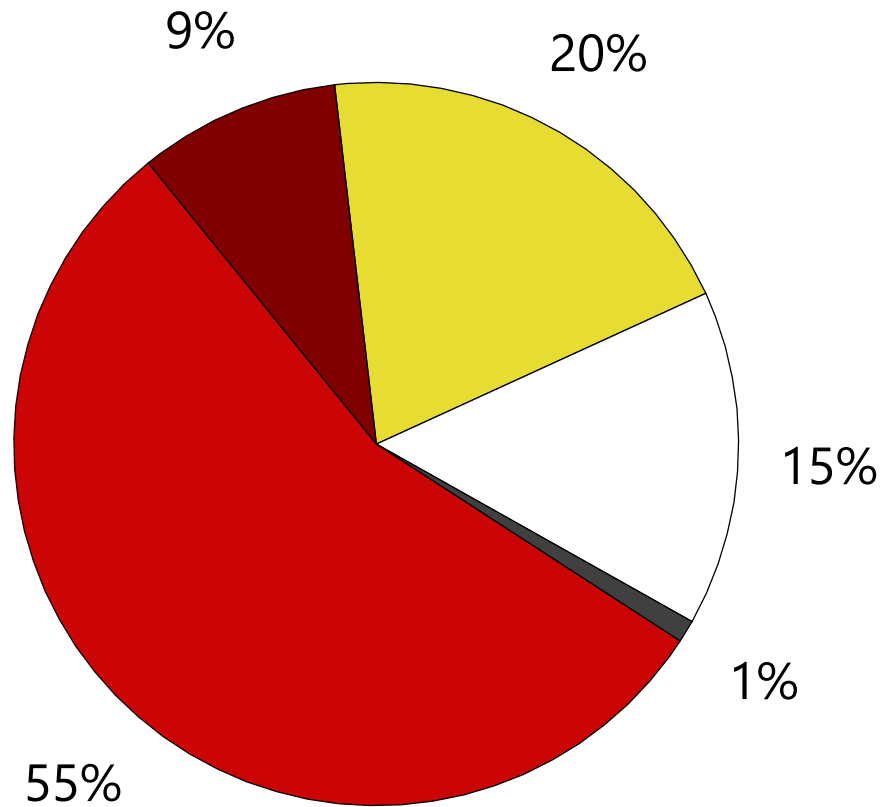
Advisory,
social and
educational
services

Interests of
Maltese
Engineers
and
Profession

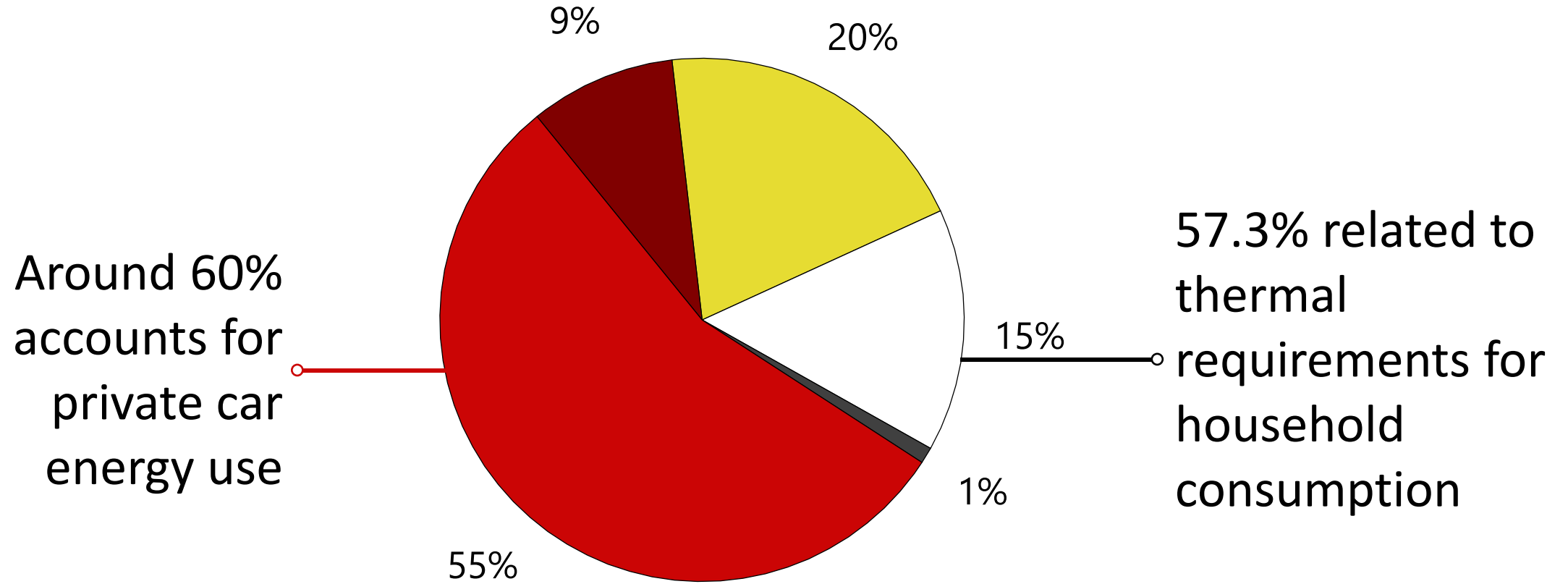
Promote
Standards &
Code of
Ethics

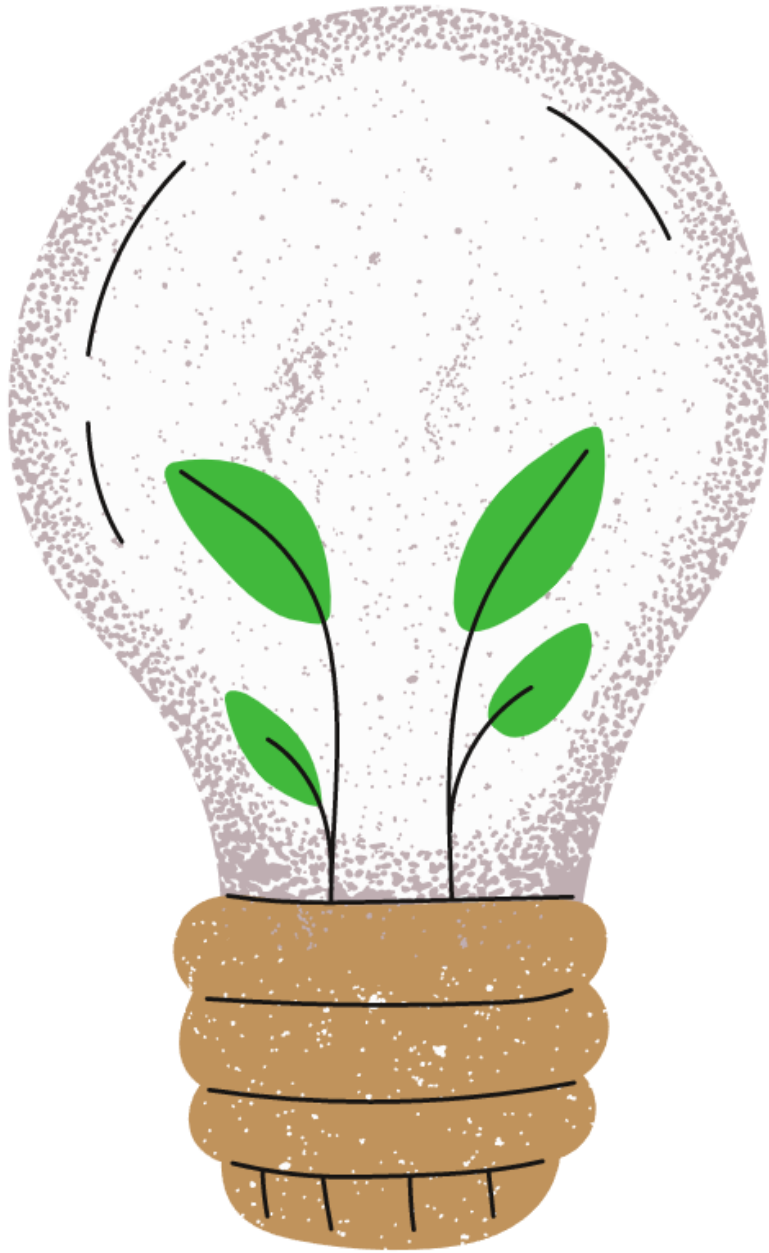
Continuing
Professional
Development

Energy Consumption Trends



Energy Consumption Trends





What is Energy Efficiency?

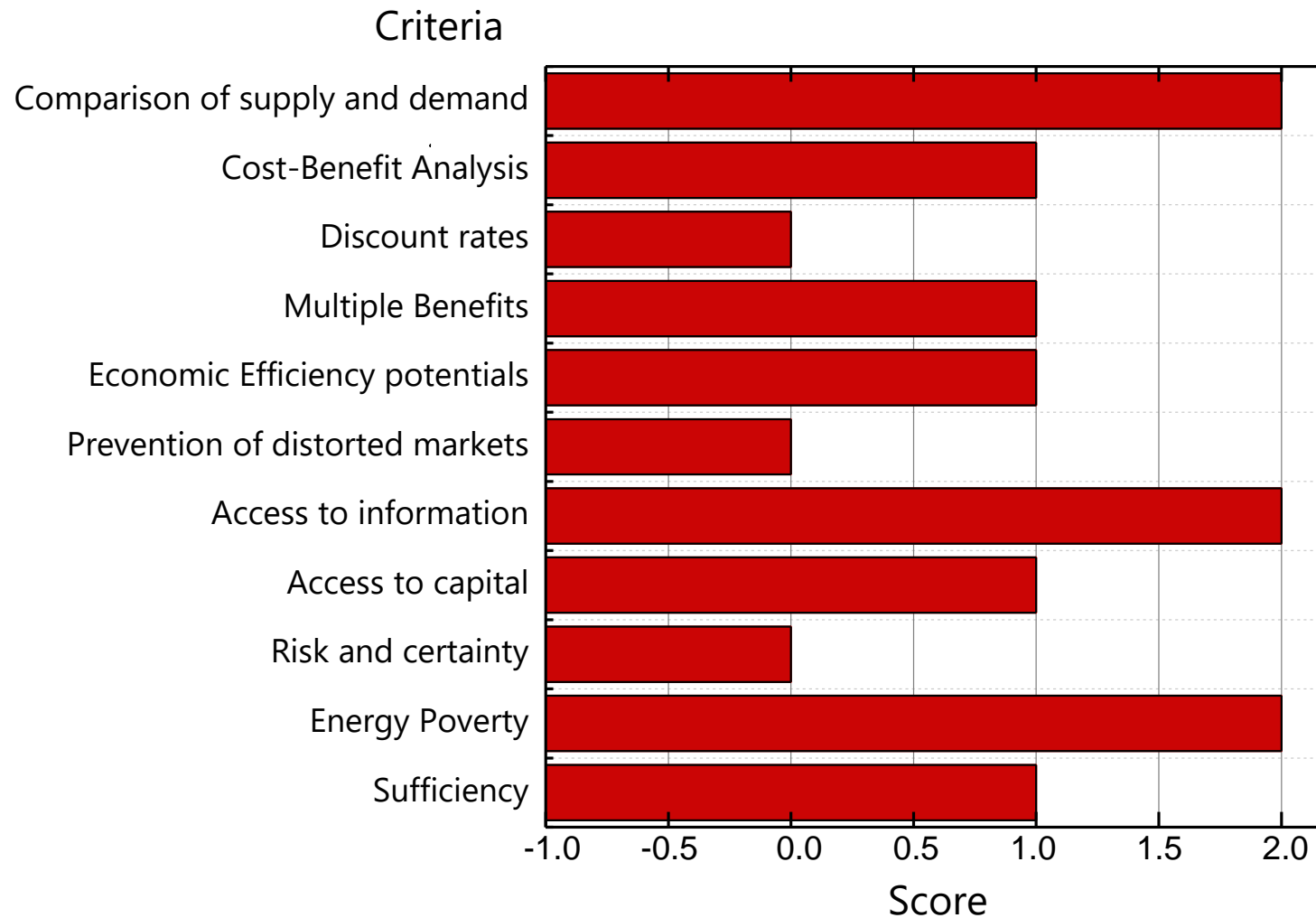
“The ratio of the output of performance, service, goods or energy to the input of energy.” EU directive 2012/27/EU



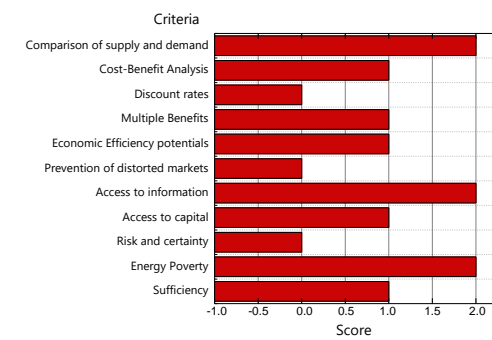
EE1 Energy Efficiency **First**

EE1: Taking utmost account of cost-efficient energy efficiency methods in shaping energy policy and making relevant investment decisions.

Policy Implementation Efficacy



Efficacy Overview



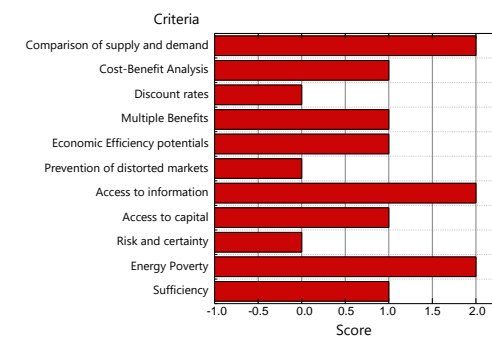
Supply and demand are considered in screening and no prioritisation is given to either. **Discount rates** were found to differ between supply and demand.

Cost benefit analyses are conducted but need to be taken into consideration in policy decisions.

Multiple benefits are recognised and some of these benefits are quantified and incorporated in the decision making process.

Previous policymaking trends often prioritised supply-side resources over demand-side solutions. This can result in a **distorted market** and ideally such past policies are addressed.

Efficacy Overview



Access to information is catered through information campaigns designed to increase awareness of both supply and demand.

Financial incentives are ideally offered across different sectors together with measures to reduce **risk** for individuals or companies in adopting EE1.

Social policies to reduce **energy poverty** alongside targeted and non-targeted measures for energy efficiency in housing are available. Ideally this is coupled with policies to improve **energy sufficiency**.

Role of the engineer in the solution

The engineer is the reference point for energy efficiency, energy management and resource management.

Nowadays, it is more crucial than ever before to have **engineering professionals** involved in the design phase for complex projects and policies.



**Thank you for
your attention**

